
Wingrider & Weyrling Performance Rankings

Last updated August, 2004

The performance of wingrider personas in the fighting Wings of the Kadanzer Weyr (as well as weyrlings in the Weyrling Wing) will be determined by the amount of membership activity submitted for publication in an individual character's name. Stories and articles will earn points on a word-count basis, with one point being awarded for every 650 words; poetry is valued at ½ point per full page (which may take several poems to fill, depending on type & length of poem).; and artwork is scaled at ½ point up to 2 points per page basis. At the end of at each year, accumulated points will determine that individual' character's performance in the annual Turn's End Games, as well as contribute to the performance of that persona's entire Wing.

A zero score in this wingrider performance system does NOT mean that the wingrider in question is considered a poor dragonrider; instead, that individual is considered an average performer within his/her Wing. The wingriders who accumulate a lot of points, however, will be the ones recognized as being exemplary 'riders and given fictional recognition as such in the Weyr's annual Turn's End Games.

Guidelines for the Wingrider Performance system are as follows:

- 1) Stories, poetry, art, or other submissions written about a character who is currently serving as a wingrider, wingsecond or Wingleader are counted toward individual and Wing performance.
- 2) To be counted, submissions must include the active participation of the wingrider persona. For example -- if a wingrider has a walk-on role and speaks a word or two or has a single action, that will not earn a point. However, a more active role in a story centered around another persona may earn some points for a supporting persona. Point awards for multiple personas can be decided by the author(s) involved.
 - The use of a wingrider by other members does not count -- i.e., if your persona appears in someone else's story, you do not earn credit for another member's work.
 - The exception to this rule is for artists who draw artwork of other members' personas. These individuals will earn additional points for their own personas by creating art of other members' characters.
 - When multiple authors have participated in a collaborative story, the story is worth only as many points as there are pages. Those points are divided equally among the authors involved, unless the authors jointly indicate otherwise.
- 3) Materials posted to an RP do not count toward wingrider rank points. However, if RP material is turned into a story, points can be earned by the collaborating authors.
- 4) All submissions will also earn credit toward a gold firelizard egg as well as toward an individual character's wingrider ranking.

This grading system is a way to reward those members who actively use and support their wingrider personas. Any questions or concerns about this system can be directed to the BOD. Some exceptions may be allowed -- for example, if a member earns points for a wingrider persona but wants to say that this persona performs lower than the rest of the Wing, this will be allowed, even if the point system contradicts it. However, the reverse (claiming a wingrider persona is a top performer within their Wing without the points to back up that claim) will not be allowed.

Turn's End Games will take place on every Turn's End (13.29) as Threadfall allows, and top performing wingriders and Wings are celebrated in the following categories:

- Top Performing Flight
- Top Performing Wing (combat Wings & Queen's only; Weyrling Wing not included)
- Top Performing Wingleader (first, second & third awards given)
- Top Performing Wingsecond (first, second & third awards given)
- Top Performing Goldrider (first, second & third awards given)
- Top Performing Bronzerider (first, second & third awards given)

- Top Performing Brownrider (first, second & third awards given)
- Top Performing Bluerider (first, second & third awards given)
- Top Performing Greenrider (first, second & third awards given)

All awards will be fictional in nature. Submissions approved for print during a calendar year (i.e. January through December) will be applied to a wingrider's performance for that year; stories which are approved for print long after the end of a year will be counted in the new year's point categories. Awards for mystery art submissions are not made until the art has been claimed.

Weyrling Wing Class Ranking/Grading System

Just as the performance of wingriders is determined by the level of activity a member puts into that character, the performance of weyrling personas in the Weyrling Wing are determined by the amount of membership activity submitted in that weyrling character's name. Stories, poetry, artwork and other submissions will be counted on a point-per-page basis. Members with candidate personas can begin generating Weyrling Wing rank points for a persona as soon as that persona has been accepted as a candidate. Written materials are counted on a point-per-page basis; artwork may be worth from ½ point to 2 points in value, depending on the level of individual effort.

A weyrling persona can safely graduate without the accumulation of any points; a zero or low-point score simply means that the weyrling in question is an average student in the Wing. The students who accumulate a lot of points, however, will be recognized as being exemplary students and as being at the top of their weyrling classes.

Guidelines for the Weyrling Class Ranking system is as follows:

1) Stories, poetry, art, or other submissions written about a character who is currently serving as a weyrling in the Weyrling Wing, or as a Candidate, are counted toward class performance. This includes Search stories.

2) To be counted, submissions must include the active participation of the weyrling persona. Materials concerning other personas will not be counted (although they are considered as applying toward earning a gold firelizard). For example -- a story about a persona who is a combat rider will not apply toward your new weyrling if the weyrling simply makes an appearance. However, if the weyrling has an active role in a story centered around another persona, the weyrling may earn some points at the Weyrlingmaster's discretion.

- The exception to this rule is for artists who create artwork of other members' personas currently in the Weyrling Wings, or who are Candidates or Weyrling Wing staff. Artwork for these individuals will earn additional points for the artist's own candidate or weyrling of choice.

3) Materials posted to an RP do not count toward Weyrling Wing points. However, if RP material is turned into a story for the 'zine, points can be earned by the collaborating authors.

4) At the Weyrlingmaster's discretion, side projects in support of the Weyrling Class or the Weyr at large may earn Weyrling Wing extra-credits points. The types of projects and the points those projects are worth are at the discretion of the Weyrlingmaster.

5) Materials submitted after graduation will not count toward Weyrling Rank points. Weyrling stories which are not approved within one month of graduation will not apply toward Weyrling Rank point (they will instead be applied toward the wingrider performance rankings).

This grading system is a way to reward those members who actively use and support their weyrling personas. Any questions or concerns about this system can be directed the Weyrlingmaster. Some exceptions may be allowed -- for example, if a member earns points for a weyrling persona but wants to say that this persona performs lower than the rest of the class, this will be allowed, even if the point system contradicts it. However, the reverse -- claiming a weyrling persona is at the top of their class without the points to earn the rank -- will not be allowed.

HOW ART POINTS ARE APPLIED:

A single piece of art may take its creator as much time as an author takes to write a story. We recognize that there is no way to faithfully rate artwork in our point-per-page system. The best we can accomplish is the following:

Simple sketch = ½ point

Finished piece (b&w or color) = 1 point

Showcase effort = 2 points

A **sketch** is an unfinished piece of work or something that is clearly either incomplete or done with a minimum of effort. Two valuable examples of sketches would be:

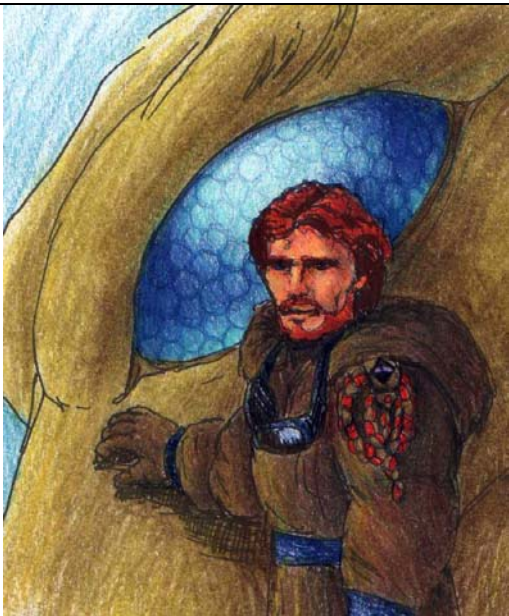


Luka & Savukath; portrait by Kat McNamara



Kenred; portrait by Daya Knight

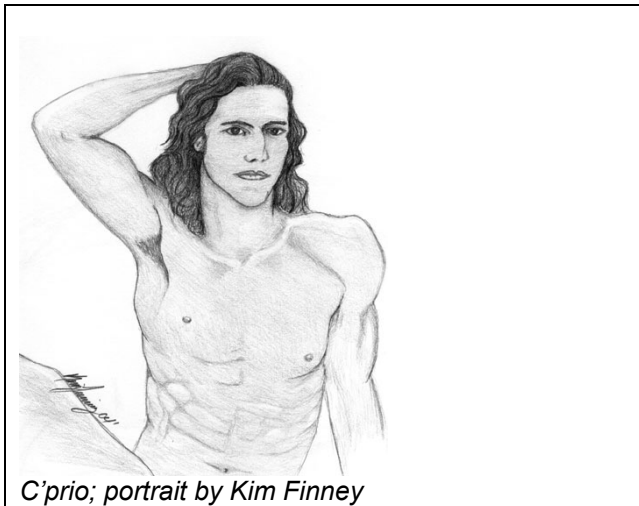
A piece of **finished art** can be in black or white or in color; the artist has clearly finished with it. Four excellent examples of a finished piece would be:



Wingleader L'ars; by Julia Sanzberro



Weyrwoman Valenne; by Samantha Schmuir

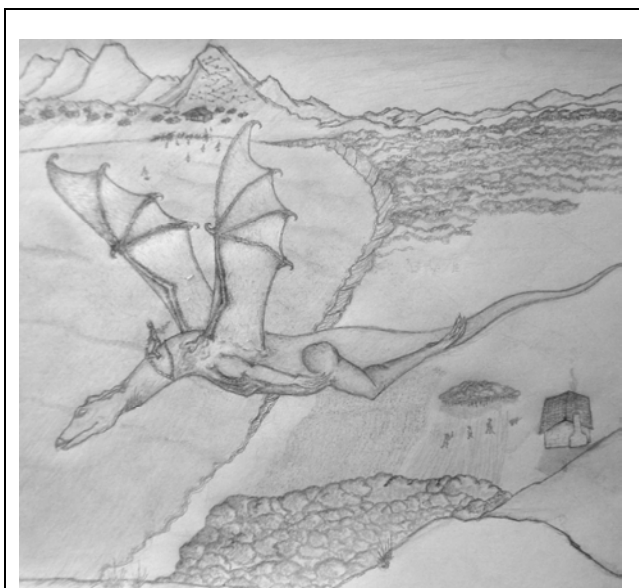


C'prio; portrait by Kim Finney



Eilsa & Incane; art by Jennifer Bragg

In a **showcase effort**, the artwork is rich in detail beyond the central figure; the background is well developed, or a full story is told within the frame of the picture. Showcase efforts need not be in color, they need to simply be an outstanding example of an individual's talent.



C'sean & Ianth; by Darren Robinson



Bh'ruk; portrait by Smitty



A gold's suitors; by Holly Hutchinson



Headsecond Resla; by Ellen Million